

GEMINI BUILDING AND CONSTRUCTION PTY LTD  
EST 2015

# CAPABILITY STATEMENT

A QUALITY BUILDER  
YOU CAN **TRUST**



**GEMINI**  
BUILDING & CONSTRUCTION

✉ [info@geminiconstruction.com.au](mailto:info@geminiconstruction.com.au)

🌐 [www.geminiconstruction.com.au](http://www.geminiconstruction.com.au)

ABN: 609 010 568

ACN: 346 090 10568

# TABLE OF CONTENTS

Company Profile	1
Gemini Capabilities	2
De-fit & Make Goods	3
Resorts & Eco Tents	4
Restaurants & Cafes	5
Residential Homes	6
Marine, Jetty, Boardwalks & Commercial Decking	8

# COMPANY PROFILE

## Gemini Building and Construction Pty Ltd est 2015

Trading name - Gemini Building and Construction

ABN: 609010568 | ACN: 34609010568

Building Contractor Licence - **BC - 103219**

Building Practitioner Licence - **BP- 103607**

### ADDRESS:

Unit 2 / 6 Uppill place, Wangara  
200SQM workshop - 100SQM office

**MOBILE:** 0406 190 090

**EMAIL:** [info@geminiconstruction.com.au](mailto:info@geminiconstruction.com.au)

**WEBSITE:** [www.geminiconstruction.com.au](http://www.geminiconstruction.com.au)

### MANAGING DIRECTOR:

Mark Turvey

### ACCOUNTS:

In house book keeper and accounts department

### TRADES:

Multiple onsite carpenters, all with lead hand capabilities in their specialist fields.

### GENERAL EQUIPMENT:

- Van, trailer and Ute's
- Specialised carpentry and on site joinery equipment
- Safety equipment
- Mobile scaffolding
- Site fencing
- Site boxes, lock up and welfare facilities
- A range of structural props
- A range of cutting equipment and vacuum sets

# MARK TURVEY

MANAGING DIRECTOR

Mark started his apprenticeship at 16 years old and has since worked in the construction industry. Mark gained on site knowledge as a carpenter, lead hand carpenter, site manager and construction supervisor and now owns his own company trading as a registered builder. Marks passion and view for the company is to provide the most professional service lead by trust and quality.

## QUALIFICATIONS:

- Carpentry diploma, City and guilds qualified in carpentry and Joinery
- Certificate IV in Construction project management
- Diploma in Building and Construction with Master builders WA



# GEMINI CAPABILITIES

Gemini are a Perth based building and construction company specialising in residential and commercial renovations and extensions. Gemini provides an industry leading construction experience with the eye for detail and personal attention of a small building company but with the processes and professional ability of a large firm. The Gemini team is highly experienced in building, project and construction management.

## SERVICES



RESIDENTIAL



BOUTIQUE HOMES



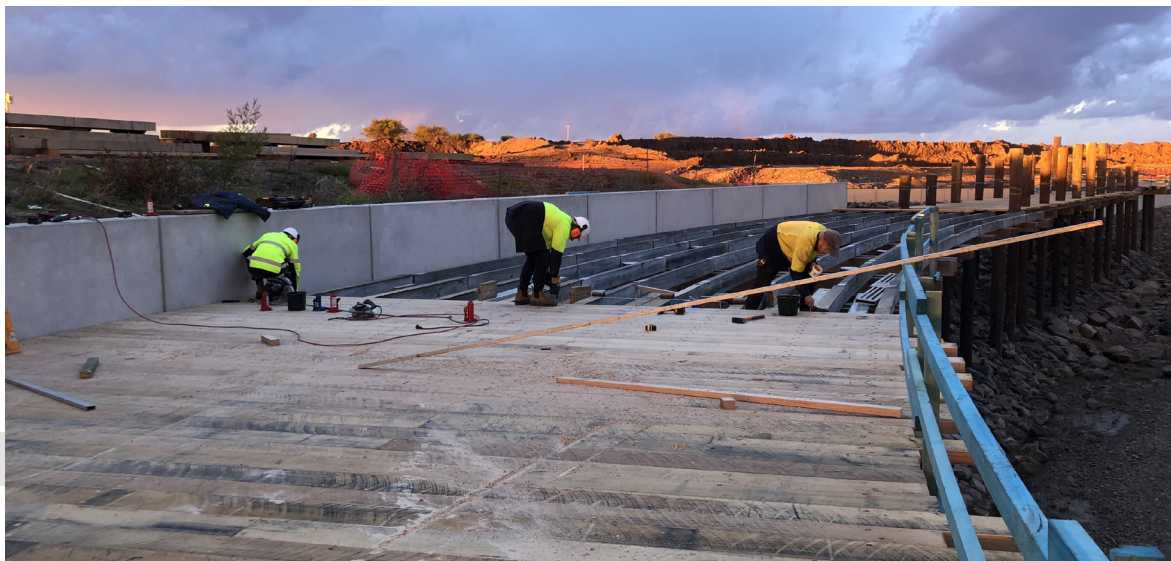
COMMERCIAL



CARPENTRY

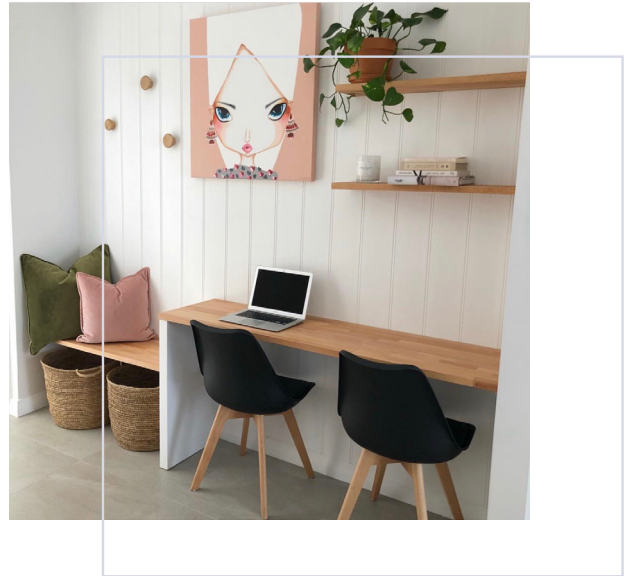


MARINE, JETTY & DECKING



# RESIDENTIAL HOMES

If you are building your forever home, or a home that you plan on using and enjoying for many years then we want to build it for you. It's that connection with a building that makes us love what we do. It is the long lasting relationships built on quality workmanship that sets us aside from other builders. We will build your home to a high standard and walk away knowing that the quality we put in now will last a lifetime.



# RESTAURANTS & CAFES

Our team of experienced trades will deliver a high standard of workmanship throughout your project. We work with many interior designers and architects and can point you in the right direction with design and selections. Once drawings are complete we project manage all council and strata approvals if required through to handover.

Our experienced team know building codes and requirements in this sector and enjoy bringing your ideas to life and ensuring the safety of everyone involved.



## DE-FIT & MAKE GOODS

Gemini can execute a de-fit and refurbishment quickly and efficiently. We work with clients and property managers to make cost effective decisions to make the most out of an old commercial space and rejuvenate as required. Our waste recycling and sustainability policies ensure the best processes.

We have valuable relationships with quality tradesmen throughout Perth that allow us to be efficient and cost effective in this field. We understand the end of lease make good requirements. We advise and work with both tenants, property managers and clients to ensure the best result for all.





# RESORTS & ECO TENTS

Gemini have the ability to mobilise anywhere in Australia. The experienced team has been involved in many projects over the last few years including Habitat Noosa eco camp resort, Barossa valley eco tents and many more. With our mobile capabilities we can manage a regional resort expansion supplying cost effective project and site management anywhere in Australia.

Our management employs local tradesmen to complete tasks to a high standard where we can to save costs and support the local community.



# CIVIL, MARINE, JETTY BOARDWALKS AND COMERCIAL DECKING

The Gemini management and carpentry team are leaders in this field. We have worked on some major projects throughout Australia including 2 berthing facilities on the side of Busselton jetty, amphitheatre joist and decking install at Hillarys Boat Harbour and 1800 square meters of decking in Shell Cove, NSW. Gemini have most recently worked alongside SMC at Port Coogee Marina managing the civil works of package 1 and over water decking. This project commenced in September 2021.

Gemini Building & Construction are capable and experienced in boardwalks, jetty maintenance, timber and steel installations over land and water. Gemini supply an industry leading quality to the commercial sector.





**GEMINI**  
**BUILDING & CONSTRUCTION**

Building Practitioner - Mark Turvey - BP 103607  
Building Contractor - Gemini Building and  
Construction Pty Ltd - BC 103219